

# 114 Dining tables



“This beautifully proportioned dining table by Didier Gomez is an elegant addition to his much admired Contours range. What first appears to be an exercise in cool, strict minimalism is warmed by a twist of playful French charm.

It fits in perfectly with the earlier pieces of the program, yet is strong enough as a stand-alone.”

*Tony Chambers, Editor-in-Chief, Wallpaper\* Magazine*

Tony joined Wallpaper\* as Creative Director in January 2003 and was appointed Editor-In-Chief in March 2007. Since joining Wallpaper\*, Tony has overseen a highly respected re-design, which included creating a new and unique font for the magazine and attracting some of the world's most exciting and talented photographers and illustrators. Prior to joining Wallpaper\* he was Art Director at Condé Nast's flagship male lifestyle title British GQ Magazine for six years. Before joining Condé Nast, Tony was Art Editor of The Sunday Times Magazine.

## “More than just an exercise in style”



# 116 Dining tables



**F2 Nils Frederking** Pages 116-117, 120



**F2 & F10 Nils Frederking**



“The starting point for F2’s folding mechanism was the idea of a table which could be folded like an umbrella. In the case of F10, the aim was a large table with lots of leg-room, which could be folded down to save space.” *Nils Frederking*

# 118 Dining tables



**EATON**  
*ligne roset*

A contemporary solid wood table, treated with oil & finished with matt varnish. Available in solid walnut, oak or cherry, in a range of widths & depths; new for 2009, an extending version with removable 50 cm extension leaf, to be positioned at one end once the feet have been pulled out. Matching bench also available.

Fixed version H 76 W 160/170/180/190/200/210/220/230/240 D 90/100  
Extending version H 76 W 110/120/130/140/150/160/170/180/190 D 90/100



**EUREKA**  
*ligne roset*

Dining table in a range of sizes & finishes. Available in natural, dark brown or ebony-stained oak veneer with matching top & extensions, or with top in taupe, anthracite or milk glass with extensions matched to frame.

Dining table H 74 W 90 L 140  
Dining table H 74 W 90 L 165



**TRAPEZE**  
*Evangelos Vasileiou*

Dining table with either fixed or extending top, in oiled, varnished solid walnut.

Extending H 75 W 175.5 D 100  
Fixed H 75 W 160/170/180/190/200/210/220/230/240 D 100



**EXTENSIA**  
*ligne roset*

Available in four lengths, three wood finishes (solid beech finished in dark brown, natural or ebony-stained oak veneer), two lacquer finishes (pure white or anthracite) & three glass finishes (taupe, milk or anthracite). EXTENSIA is as adaptable now as it was more than fifteen years ago...

Dining table H 74 W 94 L 94 / 140 / 160; H 74 W 109 L 180



**8 A 12**  
*Idelfonso Colombo*

Top and extensions finished in natural-stained American walnut veneer, or toughened milk or anthracite glass; two extensions in gloss white or gloss anthracite lacquer may be added to create a tabletop of dimensions 290 x 95 cm, which will comfortably accommodate 12 persons. The 'inverted U' feet are in gloss white or gloss anthracite lacquered aluminium.

Dining table H 74 W 95 L 180/290



**CONTOURS**  
*Didier Gomez*

A generously-proportioned dining table, available with a fixed top or with an extension leaf. Top finished in dark brown, natural or ebony-stained oak veneer or oiled, varnished solid American walnut (fixed version only). Legs in oak-clad or walnut-clad solid wood – parallel to top at one end, & perpendicular to it at the other.

Table with fixed top H 74 W 110 L 240  
Table with extension leaf H 74 W 100 L 170/280

# 120 Dining tables



**FIRST GLASS**  
*ligne roset*

Dining table with two 12 mm thick toughened glass tops & central 60 cm extension: the principle of this table is to extend whilst leaving the legs at each end - when fully extended the extension slides into place automatically. Choice of anodised aluminium frame with clear glass tops, or black anodised aluminium frame with anthracite glass tops.

Dimensions: H 76 W 90 L 180 / 240



**CRAFT**  
*Delo Lindo*

Extending dining table with 2-part central steel pedestal finished in a combination of brilliant chrome (bases) & matt chrome (trim): pedestal supports two half-moon tops which slide apart to take two 60 cm extension leaves, which have fixings to enable them to be hung in a cupboard when not in use. Seats 6 when closed, and 10-12 when extended. Choice of finishes: dark brown or ebony-stained oak or gloss white lacquer.

Dimensions: H 74 Ø 130 (EXTENDED LENGTH: 250 CM)



**HYANNIS PORT**  
*Eric Jourdan*

Table with two half-moon tops in panels of particleboard finished in either oak veneer or lacquer. Lower pedestal in multi-ply, finished in either oak veneer or lacquer. Base in brilliant-chromed steel with adjustable jacks set into the uprights. Table has two 60 cm extension leaves, delivered separately. Dimensions when open: 271 cm. When closed (that is, without extension leaves), the table seats 6 - 8; with the two extension leaves in place, it can accommodate 10 - 12.

Dining table H 74 W 151 L 140



**PORTEFEUILLE**  
*Pascal Mourgue*

Frame in lacquered steel; top in 22 mm thick oak veneered or lacquered MDF. Base in lacquered MDF. This table accommodates 4 persons; the top pivots on itself and opens out to double its surface area, in which case it will accommodate 6-8.

Dining table: H 74 W 75 L 150



**F2 & F10**  
*Nils Frederking*

F2 : round folding table with top comprising 3 articulated panels. Base in chromed steel; top in slatted multi-ply finished in either lacquer or veneer. When folded, table is 8 cm thick. F10 : folding table with base in chromed steel and top in slatted multi-ply finished in either lacquer or veneer. When folded, table is 8.5 cm thick.

F2: H 75 Ø 125  
F10: H 74 W 92 L 165



**CINELINE**  
*Pagnon & Pelhâitre*

A majestic table combining ingenuity, technology and aesthetics. Top in gloss white lacquered alveolar panels with brilliant-chromed steel feet; extensions are stowed vertically beneath the top on the two 'short' sides, and then lifted to horizontal position. Seats 6 when folded, and 10-12 when unfolded.

Dimensions folded: H 74 W 100 L 160  
Dimensions unfolded: H 74 W 100 L 298



Dining tables  
EATING

# 122 Sideboards



**LINES**  
*Peter Maly*

Low sideboard, set on either a solid base, or an underframe; drawers are equipped with an internal drawer ('tiroir à l'anglaise'), with DVD storage in the main drawer. Choice of finishes: gloss white lacquer with satin white interiors, or gloss anthracite or gloss red lacquer, both with satin anthracite interiors.

Sideboard with 2 drawers H 41.9 / 60 W 150 D 56.  
With 2 drawers & pull-down flap H 41.9 / 60 W 220.5 D 56



**CEMIA**  
*Peter Maly*

Sideboard with four drawers or two doors & three drawers, with structures finished in satin white lacquer or walnut veneer: doors & drawer fronts finished in gloss white, gloss taupe or gloss anthracite lacquer. Brilliant-chromed steel feet.

4-drawer sideboard H 72 W 196 D 50  
Sideboard with 2 doors & 3 drawers H 72 W 196 D 50



**CONTOURS**  
*Didier Gomez*

Sideboard in natural/ebony-stained oak veneer or gloss white, taupe or anthracite lacquer, with a tubular framework finished in 'brilliant steel' or 'gunmetal'. Sideboards in natural oak or gloss white lacquer have tops in toughened milk glass; those in ebony-stained oak have tops in toughened anthracite glass.

3-door sideboard (1 internal drawer): H 75 W 189 D 45  
4-door sideboard (2 internal drawers): H 74 W 250 D 45



**COPLAN**  
*Pagnon & Pelbaître*

Sideboard with sliding coplanar doors: set on the same plane, they pivot on opening, sliding one in front of the other. One or two internal drawers (tiroirs à l'anglaise) with cutlery racks may be added as an option. Choice of finishes: gloss white or gloss anthracite lacquer.

Sideboard H 80 W 200 D 50



**HYANNIS PORT**  
*Eric Jourdan*

To match the range of storage of the same name, a sideboard with 2 doors & 3 drawers, or with sliding doors concealing 8 separate storage areas. Choice of ebony-stained oak veneer or gloss white lacquer, with brilliant-chromed handles & feet.

Sideboard with 2 doors & 3 drawers: H 79.7 W 160 D 52  
Sideboard with sliding doors: H 79.7 W 197 D 52



**EVERYWHERE**  
*Christian Werner*

Sideboards in a range of widths & specifications: with 2 doors & 3 drawers or 2, 3 or 4 doors. Carcases finished in dark brown or ebony-stained oak veneer, pure white lacquer or anthracite lacquer (certain versions only). Tops matched to carcasses, or in aluminium.

Sideboard with 2 doors & 3 drawers: H 94 W 207 D 44  
Sideboard with 2/3/4 doors: H 94 W 138/207/276 D 44



**CINELINE**  
*Pagnon & Pelbaître*

Sideboard with 6 drawers or 4 doors which transforms into a dining table or desk. The 2-part top unfolds circularly to make a table which can accommodate 4 persons. Choice of finishes: satin white lacquer or ebony-stained oak veneer.

As a sideboard H 76.4 W 225 D 55  
As a table H 76.4 W 112.5 D 1100



**CINELINE**  
*Pagnon & Pelbaître*

Sideboard with 3 drawers & sliding door. Structure & drawers finished in natural or ebony-stained oak veneer or pure white lacquer; sliding door in natural or ebony-stained oak veneer, pure white lacquer or milk, anthracite, bordeaux or taupe glass. Feet finished in aluminium lacquer.

Sideboard H 84 W 220 D 50

# 124 Tableware



**PAYSAGES**  
*J.F. Dingjian - E. Chafai*  
Crockery in gloss white enamelled moulded porcelain.  
Curved plate H 3.6 Ø 23  
Dessert plate H 2 Ø 20 Bowl H 7 Ø 14.7



**PAYSAGES**  
*J.F. Dingjian - E. Chafai*  
Bowls in gloss white enamelled moulded porcelain.  
Bowl H 7 Ø 14.7  
Salad bowl H 13 Ø 27



**PAYSAGES**  
*J.F. Dingjian - E. Chafai*  
Dish in gloss white enamelled moulded porcelain.  
H 4.5 W 20 L 45



**PAYSAGES**  
*J.F. Dingjian - E. Chafai*  
Plates in gloss white enamelled moulded porcelain.  
Serving plate H 1 Ø 30  
Plate H 2 Ø 27



**BALTO**  
*Guillaume Bardet*  
Set of 6 liqueur glasses/espresso cups in white opaline mouth-blown glass.  
H 8.2 Ø 6



**BALTO**  
*Guillaume Bardet*  
Sets of 6 glasses in white opaline mouth-blown glass.  
Wine glasses H 12.5 Ø 7.3 Water glasses H 14 Ø 9  
Champagne flutes H 19.5 Ø 5.5



**ABRACADABRA**  
*Emilie Littras*  
Magic wand-shaped salt & pepper shakers in food-grade stainless steel.  
L 32 Ø 1.4



**MAKI**  
*ligne roset*  
6 pairs of chopsticks in exotic barián kingwood.  
L 25



**LOTUS**  
*Siw Matzen*  
Crockery in brilliant white enamelled bone china.  
Small plate: H 3 W 20 D 20 Large plate: H 3.5 W 27 D 27  
Curved plate: H 6.2 W 20 D 20 Dish: H 5.5 W 13 D 13



**MOONLACE**  
*Jean Marc Gady*  
Square plates in brilliant white enamelled earthenware.  
H 3 W 23.5 D 23.5



**BON THÉ**  
*Tous les Trois*  
Plates in gloss white enamelled vitro porcelain with black motif to one side.  
Small H 0.9 Ø 17 Large H 0.9 Ø 26.8



**BON THÉ**  
*Tous Les Trois*  
Tea service in gloss white enamelled vitro porcelain with black motif, or satin black.  
Teapot: H21 W11 D18 Cup: H6.5 W9.5 Saucer H1.07 Ø14



Tableware  
EATING

# 126 Tableware



**AIR CUP**  
*Jean Marc Gady*  
Espresso cups in mouth-blown heat-resistant borosilicate glass.  
H 7 Ø 7.8



**SPOUTNIK**  
*Guillaume Bardet*  
Glass & carafe in mouth-blown heat-resistant borosilicate glass.  
Glass H 13.3 Ø 8 Carafe H 23 Ø 8



**BOHÈME**  
*Fred Lambert*  
Carafe with stopper in amber-coloured mouth-blown glass.  
H 30 Ø 14.5



**BOHÈME**  
*Fred Lambert*  
Carafe with stopper in clear mouth-blown glass.  
H 30 Ø 14.5



**LEAF**  
*Tous Les Trois*  
Tray in brilliant-polished aluminium.  
H 5.5 W 57 D 32



**SILICATE**  
*Philippe Daney*  
Plate stand in moulded brilliant-polished aluminium.  
H 1.5 Ø 24



**RONDA**  
*Soda Designers*  
Fruit bowl in stainless steel.  
H 2.5 Ø 35



**ANTONIA**  
*Arik Levy ©-Design*  
Fruit bowl in olive green or grape-coloured mouth-blown glass.  
H 7.5 Ø 40



**RÊVE D'EDO**  
*P. Maly & C. Gollnick*  
Mouth-blown carafe.  
Carafe: H 23.5 Ø 11



**INCLINE 12**  
*Loudor design - JF D'Or*  
Pair of stopping champagne pails in moulded mouth-blown glass.  
H 23 Ø 21.5



**PYTHAGORE**  
*Alexandre Gaillard*  
Set of 6 champagne flutes in mouth-blown glass, in an eye-catching inverted pyramid shape.  
H 23 Ø 6.5



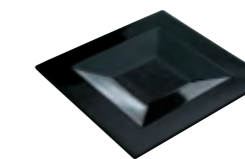
**MARTINI CHERI**  
*Martino D'Esposito*  
Glasses in clear moulded mouth-blown glass.  
H 18 Ø 13



**TONIA**  
*Arik Levy ©-Design*  
Fruit bowl in moulded brilliant-polished aluminium.  
H 7 Ø 30  
H 10 Ø 50



**EPLAFF**  
*Tous Les Trois*  
Fruit bowl in laser-cut sheet steel finished in gloss white lacquer.  
H 6 Ø 58



**LES DEUX**  
*Giesela & Peter Maly*  
Plates in brilliant black enameled ceramic.  
H 4 W 34 D 34



**RADO**  
*Philippe Daney*  
Place mat in a range of gloss lacquered or veneered finishes. Designed to fit the Moon plate.  
W 36.5 D 40; thickness 1



**MATCH**  
*Arik Levy ©-Design*  
Set of 6 whisky glasses in clear moulded mouth-blown glass.  
H 8.5 Ø 8.8



**CUT**  
*Philippe Daney*  
Small, large or extra-large glasses in clear or amber-coloured mouth-blown glass.  
H 9 Ø 6.5 H 11.5 Ø 8 H 14 Ø 7.5



**BORO**  
*Tous les Trois*  
Plate stand in moulded polished aluminium.  
H 2 W 48 D 25



**EVLAN**  
*Tous Les Trois*  
Plate stand in moulded brilliant-polished aluminium (NB except edges).  
H 1.5 W 21 L 32



**STILETTO**  
*ligne roset*  
Cutlery in 18/10 stainless steel.



**SHAMA**  
*Thibault Desombre*  
Apologies, this item is no longer available in the UK & Ireland.



**MINUIT**  
*Lucas Poupel*  
Cutlery in forged anthracite-coloured 18/10 stainless steel.



**SAFRAN**  
*Philippe Daney*  
Salad servers.  
W 8 L 32.5