

64 Occasional tables



“This little piece from Inga Sempé is instantly reassuring. No hint of imbalance, no impertinent affectation, no superficial ornamentation to drag it down. This is a table to which any type of embellishment is anathema, as is slick, vulgar minimalism. This is a table which invites careful consideration, revealing itself little by little in the exquisite details of its workmanship & function. With its putative strengths, LUNATIQUE will become a modern showpiece

of bourgeois interiors culture. However it never slips into visual banality for, through the harmony & balance of its constituent parts, the all-encompassing monochromy of the piece diverts us onto a dreamlike plane. And so LUNATIQUE is doubly deserving of its name, in both form and content.”
Christian Gärtner, Stylepark, Frankfurt

Christian Gärtner was born in 1972 & studied economics in Berlin. In 2000 he & Robert Volbard, his best friend from his schooldays, founded Stylepark, which has given itself the mission of disseminating product culture. The company now employs 15 people & offers an online database of the best design products (www.stylepark.com), a product culture magazine & many events on the theme of ‘Design Orientierung und Inspiration in der Welt des Produktgestaltung’ (‘Design Orientation & Inspiration in the World of Product Design’). For a number of years large design festivals, first in Cologne under the banner ‘Stylepark in Residence’ & for the past three years in Frankfurt under the name ‘The Design Annual’, have formed the high point of their work.

“A diversion into the dreamlike”

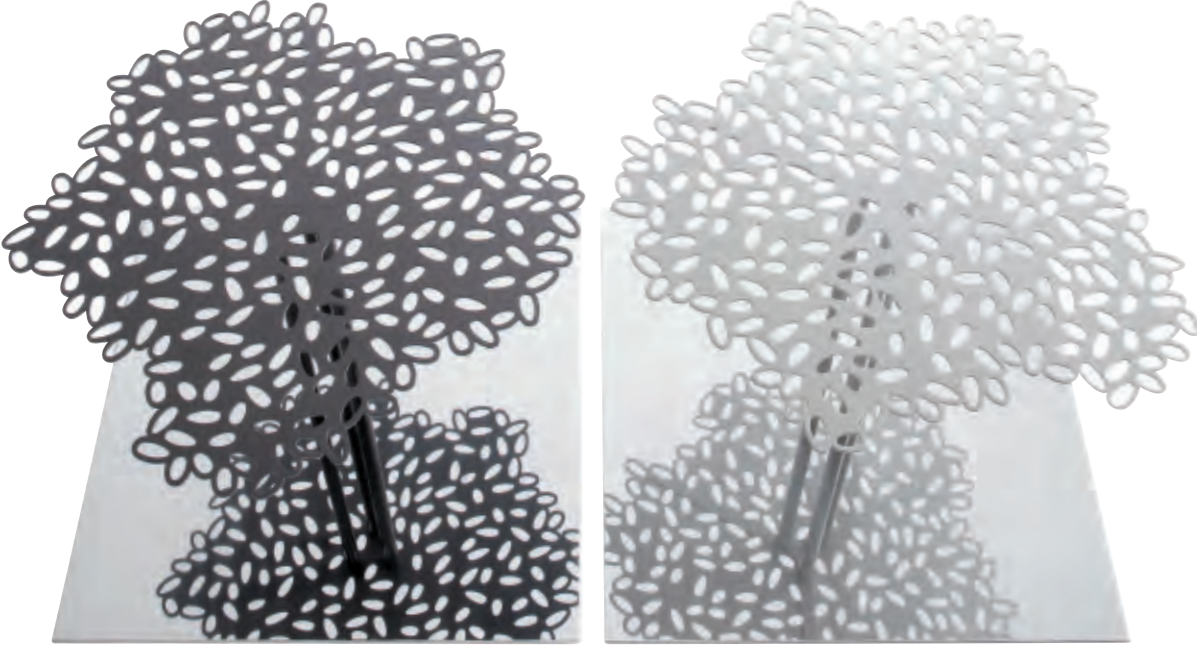


LUNATIQUE Inga Sempé Pages 65, 72

66 Occasional tables



LES FORETS *Pascal Mourgue* Pages 66, 68



“A focus of meditation on the theme of the interplay between light & shade.” *Pascal Mourgue*



Occasional tables
LIVING

STRATES PIVOTANTES *Pagnon & Pelhâitre* Pages 67, 68

68 Occasional tables



STRATES PIVOTANTES
Pagnon & Pelhaître

Low table with 3 superimposed tops, the upper 2 of which pivot; base in Epoxy anthracite lacquered steel. Finishes include gloss white, red, taupe, anthracite, bordeaux or guava lacquer, & natural, dark brown or ebony-stained oak.

When closed H 35 W 80 D 80
When fully open H 35 W 122 D 122



LES FORETS
Pascal Mourgue

Low table in laser-cut steel: choice of 'gris pierre' (stone grey) or 'brun gris' (brown-grey). Base in mirror-polished stainless steel.

Low table H 40 W 55 D 55



WOODEN TRIBU
Frédéric Ruyant

A collection of four highly graphic elements in natural-stained solid American walnut. May be used either alone, or in combination to create a low table, bedside table, sofa end table, etc.



No. 1 H 45 W 40 D 40
No. 2 H 45 W 40 D 40
No. 3 H 45 W 40 D 40
No. 4 H 45 W 40 D 40



DECA
Evangelos Vasileiou

Occasional table with structure in brilliant-chromed steel & top in brilliant-polished stainless steel.

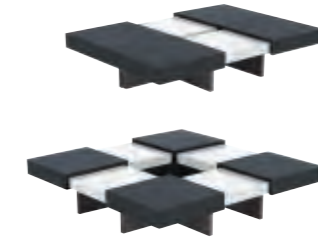
Occasional table H 35 Ø 60



DECA
Evangelos Vasileiou

Occasional table with structure in brilliant-chromed steel & top in white Carrara marble.

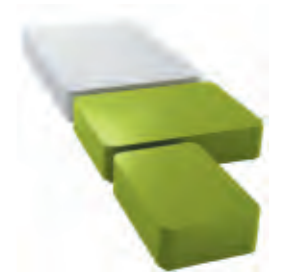
Low table H 35 Ø 60



TRANSLATION
ligne roset

Low table with four top panels in ebony-stained oak or gloss white lacquer, which slide apart to reveal four lower surfaces in gloss white, red or guava lacquer.

Low table H 25 W 90/130 D 90/130



PLURIEL
François Bauchet

Small, medium and large low tables finished in gloss white or gloss guava lacquered MDF.

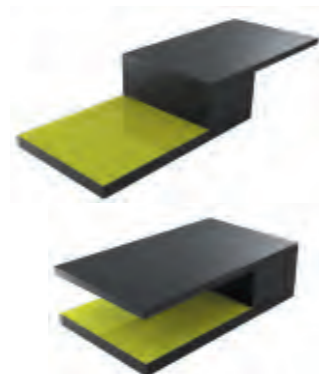
Small H 20.4 W 46 L 69
Medium H 20.4 W 69 L 92
Large H 20.4 W 92 L 138



SPINDLE TABLE
Brad Ascalon

Low table in 10 mm thick curved clear glass with sculpture detail in gloss black lacquered wood.

Low table H 37 W 125 D 43



AIR
Fred Riffel

Low table which extends by rotating the top surface by one half turn, thus increasing its length from 100cm to 165cm. Top surface finished in ebony-stained oak veneer; bottom surface finished in gloss white, gloss red or gloss guava lacquer; or both surfaces finished in gloss white lacquer.

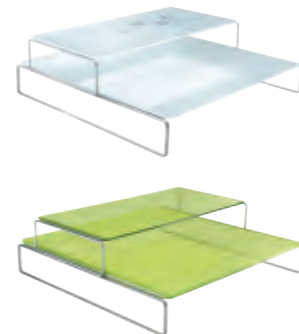
Low table H 32.5 W 100 D 60



PONTON
Deichmann & Osko

Low table with top surface in lightly oiled, clear varnished solid walnut resting on a brilliant-chromed steel frame. A glass surface rests on the lower part of the frame, upon which a glass vase may be positioned so that any flowers, etc. placed in it pass through the top surface.

Low table H 30 W 91 D 91; H 30 W 120 D 120



CRASH
Marie Christine Dorner

Modular low tables with bases in brilliant-chromed steel & tops in 17mm thick 'crash' glass (a composite of 3 sheets of glass, of which the middle one is made from broken glass, resulting in a highly original appearance). Available with/without motif.

Large H 18.6 W 112.6 D 108
Small H 18.6 W 111 D 53



PLATO
Jacques Ducru

A generously-proportioned low table finished in gloss white or gloss anthracite lacquer, with a cut-out in one corner: this is designed to take an optional tray.

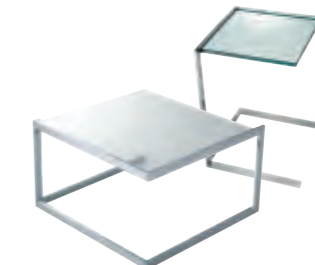
Square table H 28.5 W 95 D 95
Rectangular table H 28.5 W 120 D 80
Tray H 5 W 40 D 40



CONTOURS
Didier Gomez

Low table with 58mm thick top made from four square alveolar panels finished in natural, dark brown or ebony-stained oak veneer, with aluminium detailing. Feet in lacquered or oak veneered MDF with aluminium lacquered collar.

Low table H 35 W 150 D 150



DIAMANT
Frédéric Ruyant

Low table with frame in brilliant-chromed steel. Top in 15mm thick clear toughened glass.

Low table H 55 W 50 D 40
Low table H 35 W 60 D 60



STRUCTURE
Didier Gomez

Range of tables with tops finished in gloss white or gloss anthracite lacquer. Feet finished in grooved anthracite veneer, with junction-piece between top & feet in matt chromed steel.

Console table H 73 W 150 D 40
Low table H 30 W 120 D 120; H 30 W 135 D 65

70 Occasional tables



PÊLE-MÊLE
Bernard Moïse

Modular low table or TV/hi-fi table with an adjustable L-shaped top. Finished in natural, dark brown or ebony-stained oak veneer or gloss white lacquer.

Modular low table H 32 W 120 D 60
(when open: H 32 W 220 D 60)
TV/hi fi table H 38.5 W 122 D 56
(when open: H 38.5 W 220 D 56)



NEEDLE
Arik Levy ©-Design

Range of tops & legs in different dimensions which can be mixed & matched to create your own personal ensemble. Tops in natural, dark brown or ebony-stained oak or gloss white or red lacquer.

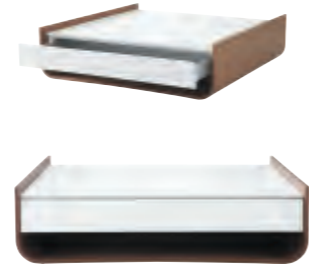
Square top W 50 L 50; thickness 6
Rectangular top W 120 L 50; thickness 6
Round top Ø 50; thickness 6
Legs H 19 or H 30



KARMA
ligne roset

Low table with 2-part top finished in natural, dark brown or ebony-stained oak veneer or gloss white lacquer which opens horizontally to reveal a tray in white translucent polycarbonate.

Low table H 26.5 W 140 D 73/98



STEM
Christian Werner

Low square/rectangular table finished in American walnut veneer & gloss taupe, gloss anthracite or gloss white lacquer. Square version has 2 opposing drawers; rectangular version has 1 single drawer. Push-catch mechanism.

Low square table H 32 W 120 D 120
Low rectangular table H 32 W 120 D 78



LUX
Soda Designers

Luminous occasional table with brilliant-chromed base & clear glass top: upper part of frame incorporates 120 LED's (30 per side).

Occasional table H 50 W 50 D 50



HELPER
Karsten Weigel

Magazine rack in gloss white lacquered steel.

Magazine rack H 44.5 W 33 D 54



BOB
Lee West

Occasional table in black lacquered glass fibre.

Occasional table H 35 Ø 32



HIDE & SEEK
Sigrd Strömngren

Small, medium & large occasional tables in gloss white lacquered laser-cut sheet steel: these may be used side-by-side, or else nesting. Can also be used as a stool.

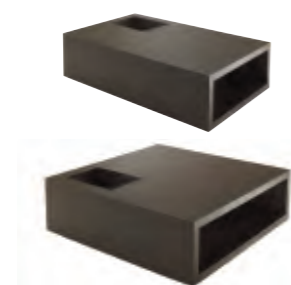
Small H 39 W 23 D 23
Medium H 41 W 25 D 25
Large H 47.5 W 27 D 27



INBOX
Jaques Ducru

Small occasional table/stool in satin-varnished ebony-stained reconstituted veneer.

Occasional table/stool H 105 W 30 D 30



INBOX
Jaques Ducru

Low square or rectangular two-decked table in satin-varnished ebony-stained reconstituted veneer. Top surface incorporates a niche for magazine storage.

Square table H 30 W 100 D 100
Rectangular table H 30 W 120 D 70



YO-YO
Pagnon & Pelhâitre

A clever height-adjustable dining/coffee table. Tops in dark brown or ebony-stained oak veneer, or milk or anthracite glass; bases in aluminium lacquer; option of graphite in the case of ebony-stained oak or anthracite glass finishes, & white in the case of milk glass.

As a dining table H 74 W 125/164 D 80
As a coffee table H 38 W 125/164 D 80



CRESCENDO
Pagnon & Pelhâitre

Height-adjustable table: unfold the top to convert to a dining table to seat six. Top in natural, dark brown or ebony-stained oak veneer; base finished in aluminium lacquer, or graphite in the case of the ebony-stained oak finish.

When open H 38/74 W 110 D 140
When closed H 38/74 W 110 D 70



TROLLEY
Frédéric Ruyant

Trolley with frame in brilliant-chromed steel & surfaces in either ebony-stained oak veneer or gloss white lacquer. Lower surface has a brilliant-chromed lipping & holds three bottles.

Trolley H 75 W 80 D 45



TROLLEY
Frédéric Ruyant

Occasional table & console with brilliant-chromed steel frames; tops in ebony-stained oak or gloss white lacquer.

Occasional table H 35 W 45 D 45
Console table H 85 W 80 D 30



TROLLEY
Frédéric Ruyant

Occasional table with brilliant-chromed steel frame; top in ebony-stained oak or gloss white lacquer.

Occasional table H 50 W 40 D 48



TROLLEY
Frédéric Ruyant

A useful 'coffee' table with brilliant-chromed steel frame & surfaces in either gloss white lacquer or ebony-stained oak. Also available: storage box for coffee capsules in ebony-stained oak.

'Coffee' table H 75 Ø 65.5

72 Occasional tables



CHARLESTON
ligne roset

Pedestal table with resined top in MDF with inlaid horn in a checkerboard or floral motif. Brilliant-chromed base.

Chequerboard H 44 Ø 28
Floral H 50 Ø 28



LUNATIQUE
Inga Sempé

Oval pedestal table with gloss lacquered or brilliant-chromed base & top in gloss white, gloss red or gloss guava lacquer. Height of top is adjustable via an articulated ring set into the centre. Winner, VIA 2006.

Pedestal table H 41.5/59 W 58 D 36



LUNATIQUE
Inga Sempé

Oval pedestal table with brilliant-chromed base & ebony-stained oak top. Height of top is adjustable via an articulated ring set into the centre. Winner, VIA 2006.

Pedestal table H 41.5/59 W 58 D 36



GOOD MORNING
Alban Gilles

Round pedestal table finished in black, white or aluminium lacquer, or brilliant chrome.

Pedestal table H 55 Ø 45



SPOOL
Eric Jourdan

Occasional table in gloss white or platinum-coloured moulded enamelled earthenware.

Occasional table H 65 Ø 50



INOX
François Bauchet

Conical pedestal table in Epoxy black lacquered sheet steel with top in mirror-polished stainless steel.

Pedestal table H 50 Ø 44



STASH
Lee West

Occasional table with removable top set on a conical base, both of which are covered in black buffalo-hide.

Pedestal table H 36 Ø 50



OFFFRANDE
Pascal Mourgue

Low table in enamelled earthenware, with removable bowl. Choice of finishes: chestnut (standard), white, gold, platinum, turquoise, red, black or bleu marine.

Occasional table H 38 Ø 54



JEEVES
Colin O'Dowd

Occasional table/doorstop in gloss white lacquered sheet steel. Please note this item is not designed to support the body weight & should not be sat upon.

Occasional table/doorstop H 49 Ø 31



BOBINE
Michael Koenig

Occasional tables with top in brilliant-polished steel & base in brilliant-chromed steel.

Occasional table H 30 Ø 50
Occasional table H 50 Ø 70



EVERYNIGHT
Didier Gomez

Pedestal table with top finished in gloss white or gloss anthracite lacquer, mounted on two brilliant-chromed profiles. Base lacquered to match top.

Pedestal table H 45 W 45 D 45



IPN
François Bauchet

Sofa end table in gloss white, gold, platinum, turquoise, red, black or bleu marine-coloured enamelled earthenware.

Sofa end table H 31 W 32 D 32



PALETTE
Pascal Mourgue

Low table/stool in the shape of a painter's palette, made from moulded enamelled ceramic. Finished in 'gunmetal' (standard), white, gold, platinum, turquoise, red, black or bleu marine.

Low table/stool H 35 W 65 D 34.5



GLAÇON
Lee West

Sofa end table in moulded earthenware finished in mocha (standard), white, gold, platinum, turquoise, red, black or bleu marine.

Sofa end table H 34 W 33 D 33



GLAÇON
Lee West

Sofa end table in moulded earthenware finished in mocha (standard), white, gold, platinum, turquoise, red, black or bleu marine.

Sofa end table H 34 W 33 D 33



LE 5ème PIED
Noé Noviant

Occasional table in white lacquered steel. Important: base must be slid beneath the seat or foot of an armchair.

Occasional table H 60 W 22 D 35