



“Turkish design is very much on the Wallpaper\* radar at the moment & Istanbul-born designer Arzu Firuz is certainly one to keep an eye on. I love how she transforms the textile heritage of oriental wool & silk carpets into statements of modernity with subtle irony. Linoleum, her material of choice, is made of jute fibre & linseed oil, & more commonly employed as flooring

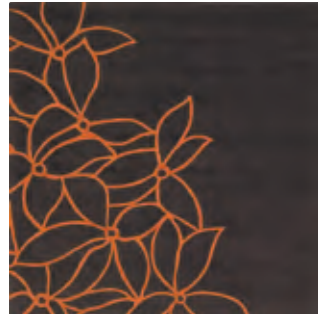
in hospitals and schools. But in its deep, almost wet looking black version, with sharply cut-out oriental patterns, this once cheap & everyday material takes on a seductive, lace-like quality.”  
*Tony Chambers, Editor-in-Chief, Wallpaper\*, London*

Tony joined Wallpaper\* as Creative Director in January 2003 and was appointed Editor-In-Chief in March 2007. Since joining Wallpaper\*, Tony has overseen a highly respected re-design, which included creating a new and unique font for the magazine and attracting some of the world's most exciting and talented photographers and illustrators. Prior to joining Wallpaper\* he was Art Director at Condé Nast's flagship male lifestyle title British GQ Magazine for six years. Before joining Condé Nast, Tony was Art Editor of The Sunday Times Magazine.

## “Darkly creative”



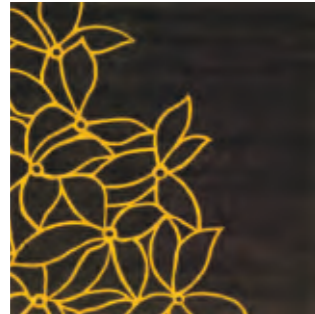
# 184 Rugs



**FLORA**  
*Carmen Stallbaumer*

Hand tufted rug in 100% pure New Zealand wool. Available in square or rectangular version in your choice of dimensions, in a choice of 48 colours.

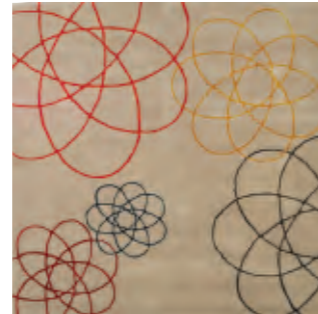
Dimensions & colours to choice.



**FLORA**  
*Carmen Stallbaumer*

Hand tufted rug in 100% pure New Zealand wool. Available in square or rectangular version in your choice of dimensions, in a choice of 48 colours.

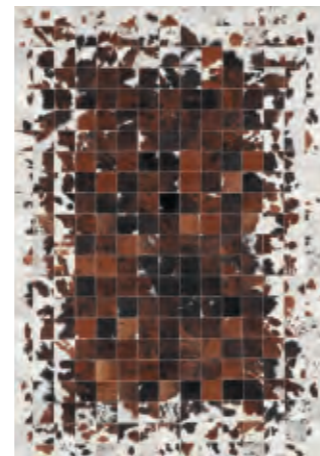
Dimensions & colours to choice.



**SPIROGRAPH**  
*Siw Matzen*

Hand tufted rug in 85% wool/15% viscose.

Dimensions: 200 x 200



**COURCHEVEL**  
*ligne roset*

Rug in 100% cowhide. Patchwork consists of 11 cm squares, sewn together. The colour brown is always in the centre, with white on the periphery.

Dimensions: 170 x 240, or to choice



**KENYA**  
*ligne roset*

Patchwork rug made from 23 cm squares of brown cowhide with 5 cm border.

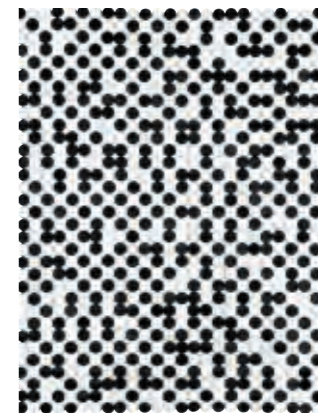
Dimensions: 170 x 240



**BIOMETRIC**  
*Eric Dubuget*

Extremely thick hand-tufted, sculpted rug in 100% wool: grey motif on beige background, or colours to choice.

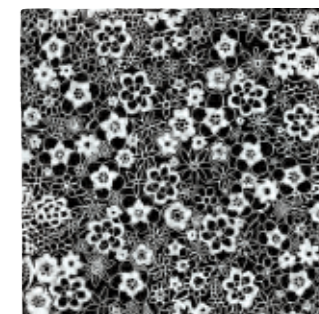
Dimensions: 170 x 240, or to choice



**SEGUIN**  
*ligne roset*

Goatskin rug with pigskin backing & random circle motif.

Dimensions: 200 x 250



**CROCHETFLOWERS**  
*Carmen Stallbaumer*

Hand-tufted rug in 100% wool with white floral motif on black background (certain flowers are in relief).

Dimensions: 200 x 200, or to choice



**AZRA**  
*A. Firuz*

Circular rug in black linoleum with stamped motif – a marriage of traditional motifs on a technical material.

Dimensions: Ø 220



**AZRA**  
*A. Firuz*

Rectangular rug in black linoleum with stamped motif – a marriage of traditional motifs on a technical material.

Dimensions: 250 x 90, 194 x 290



**ZOOM**  
*Carmen Stallbaumer*

Hand tufted rug in 100% wool.

Dimensions: 200 x 200



**TWIST**  
*Carmen Stallbaumer*

Hand-tufted rug in 100% wool. Available in square or rectangular versions, in a choice of 3 standard colours: framboise, brun-cassis, rouge bruni. Also available with colours & dimensions to choice.

Dimensions: W 200 L 250



**27 JOURS D'AMOUR**  
*J. C. de Castelbajac*

Colourful hand tufted rug in 100% wool with designer's signature & lettering motif in black.

Dimensions: 180 x 240



**SONGE**  
*Matisse Decoration*

Hand tufted rug in 100% wool. Background in beige, with black motif.

Dimensions: 180 x 270



**DIVINES COULEURS**  
*Carmen Stallbaumer*

Hand tufted rug in 100% New Zealand wool in contemporary orange, red & violet tones.

Dimensions: 200 x 250

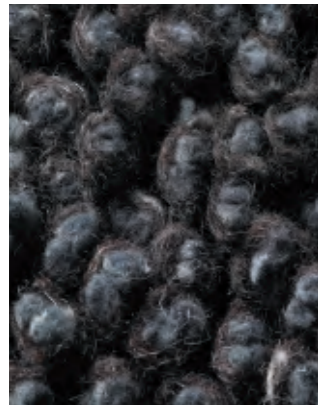


**SPLASH**  
*Carmen Stallbaumer*

Hand-tufted rug in 100% wool with circular motif. Available from stock in standard colours (as shown), or with dimensions & colours to choice.

Dimensions: 250 x 250, or to choice

# 186 Rugs



**NATURE RAMEAUX**  
*ligne roset*

An unusually thick rug in grey/brown & silver grey.

Dimensions: 240 x 170, or to choice



**NATURE GRAVIER**  
*ligne roset*

Grey-beige lightly-streaked rug in 100% pure New Zealand wool.

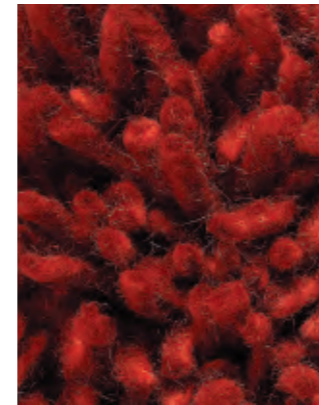
Dimensions: 240 x 170, or to choice



**NATURE GALETS**  
*ligne roset*

Natural-coloured, lightly-streaked rug with 'pebble' tufts.

Dimensions: 240 x 170, or to choice



**RASTA**  
*ligne roset*

Hand tufted rug in 100% pure New Zealand wool. Choice of anthracite, bleu, grège, brun, neige, orange, rubis, souris, blanc, rose, cuivre, aubergine, violet, turquoise, noir, vert goyave. Round or rectangular.

Dimensions to choice



**STARDUST**  
*B. Goettke-Krogmann*

Hand-tufted rug in 97% wool/3% lurex. Choice of brun/doré or anthracite/ argent.

Dimensions: 170 x 240, or to choice



**SOLO**  
*ligne roset*

Hand tufted rug in 100% pure New Zealand wool. Dimensions & colours to choice.

Dimensions to choice



**CIBLE**  
*Christian Werner*

Hand tufted rug in 100% wool with relief motifs.

Dimensions: Ø 220



**AFRICA**  
*ligne roset*

Rug in depigmented cowhide with zebra-print motif.

Surface area: approx. 5m<sup>2</sup>



**MIROIR**  
*ligne roset*

Hand-tufted rug in 100% viscose. Available in green, black, red or écru.

Dimensions: 180 x 270, or to choice



**POINT**  
*ligne roset*

Mechanically-woven (Wilton fashion) rug in 100% pure New Zealand wool. Choice of anthracite, crème, noir, orange, taupe, vert tendre.

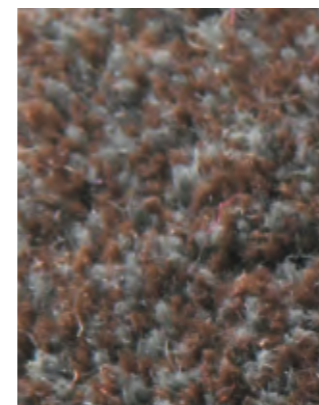
Dimensions to choice



**ANDREA**  
*Andrée Putman*

Hand-tufted rug in 100% pure wool with subtle stripes & the signature of the designer in one corner. Length of loops: 20mm.

Dimensions: 170 x 240



**GRANITO**  
*ligne roset*

Hand tufted rug in 100% wool. Available in orange, green, red, brown, grey or multi.

Dimensions: 200 x 200 or 170 x 240



**PUNTO**  
*Carmen Stallbaumer*

Hand-tufted rug in 100% wool with black background and white spots. Square or rectangular, in standard size or with dimensions & colours to choice.

Dimensions: 200 x 200, or to choice



**LONG**  
*ligne roset*

Hand tufted rug in 100% pure New Zealand wool. Colour: écru.

Dimensions: 170 x 240



**MARGUERITE**  
*ligne roset*

Rug in black, white & brown natural cowhide.

Surface area: approx. 5m<sup>2</sup>



**FACETT**  
*Ronan & Erwan Bouroullec*

To complement the range of upholstery of the same name, a quilted rug in Coda fabric (90% pure new wool/10% polyamide).

Dimensions: 133 x 240

# 188 Rugs

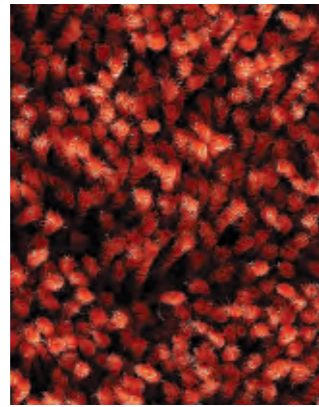


été

## SAISONS *ligne roset*

Hand-woven rug in 60% cotton/40% polyester. Choice of printemps, été, automne, hiver.

Round: dimensions to choice  
Rectangular: 200 x 250, or to choice

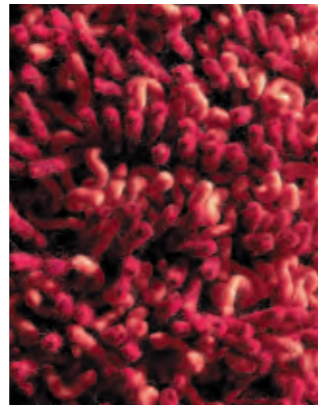
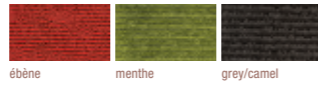


beige

## CHEVEUX D'ANGE *ligne roset*

Mechanically-tufted rug in 100% polyamide with 1cm border in Alcantara. Choice of white, beige, silver, taupe, green, red or brick.

Dimensions to choice

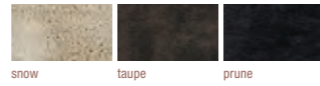


ruby

## CURL *ligne roset*

Two-colour hand-tufted rug in 100% pure New Zealand wool, with tufts in lengths 6mm/10mm/30mm. Available in 5 contemporary colour combinations. Weight per m<sup>2</sup>: 4.5kg.

Dimensions to choice

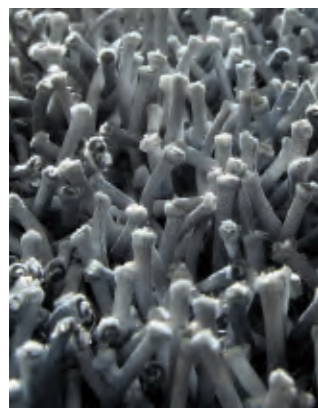


taupe

## DREADLOCKS *ligne roset*

Hand-tufted rug in 100% pure New Zealand wool. Round or rectangular version; available in eight shades.

Dimensions to choice

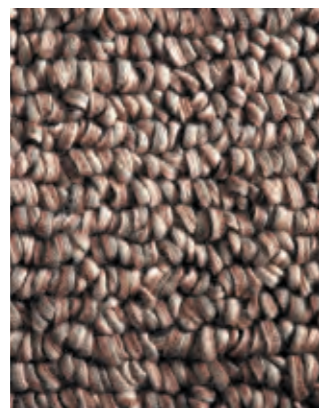


silver

## LINK *ligne roset*

Hand-woven rug in 60% polyester/40% cotton. Choice of gold, silver, red or black.

Dimensions: 200 x 250, or to choice

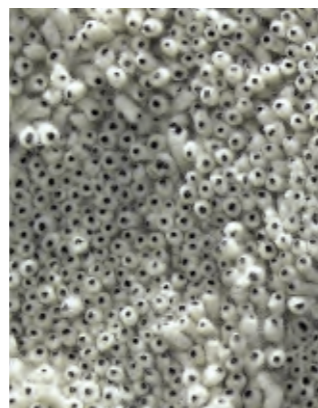


grey

## BOUCLE *ligne roset*

Hand-tufted rug in 100% pure New Zealand wool. Available in camel, beige, grey, orange or red.

Dimensions to choice



white

## FISHEYE *ligne roset*

Hand-tufted rug in 80% wool/20% cotton. Choice of black or white.

Dimensions: 200 x 250, or to choice



green

## KALEIDOSCOPE B. Goettke-Krogmann

Hand tufted rug in 100% wool with cutout motifs along its width.

Dimensions: 170 x 240



...discover our collection of cushions & throws in a *ligne roset* store near you.

# 190 Textiles/Service

## CURTAINS & PANELS

Curtains to maintain your privacy without hindering your view...  
...available with eyelets, tabs or gathers, curtains may be made up to your specified size, in your choice of curtain or upholstery fabrics from the ligne roset collection: your ligne roset stockist will be able to

advise you which ones are most suitable. Not forgetting, of course, one vital thing: curtain rails, which are available in a choice of three widths and two depths. Ask your ligne roset stockist for further details.



## FABRICS, LEATHER, ADVICE: WE'RE HERE TO HELP!

Bring your imagination to life! ligne roset offers a wide choice of upholstery materials, giving you the opportunity to really personalise your living space. The possibilities are endless: more than 500 different permutations of fabrics, colours & qualities; a wealth of choice in terms of durability, look, style, light resistance & ease of maintenance...cottons, jacquards, velours, wools & microfibres in a multitude of colours, both muted & bright: all carefully selected & rigorously tested by ligne roset. Not forgetting, of course, leather, made from the highest-grade hides from

European cattle. Your ligne roset stockist will be delighted to help you choose the right covering material for you, to ensure that your investment will give you many happy years of service. Your ligne roset stockist will also be able to offer advice on how best to care for your new seating, & to elaborate on any particular care requirements your chosen covering fabric might have: this is of particular importance if you have children or pets, or other specific issues with regard to lighting conditions or usage. It's worth considering that ligne roset furniture offers a pleasant-

ly soft sit, & cannot therefore be too tightly upholstered. This naturally means that some creasing will inevitably become apparent with use: this will vary from model to model but is perfectly normal & is part and parcel of the character of each piece. So that your ligne roset upholstery can give you years of faithful service, we strongly advise you to take note of the care instructions supplied with each model. They contain many hints & tips on day-to-day care, including advice on stain removal & general cleaning.

## Let ligne roset help you live your life the way you want to.

**Our aim:** your total satisfaction - a convincing offer, with the service to match.

**INNOVATION:** At ligne roset, innovation is our tradition. As a pioneer & critical observer of societal change, ligne roset is continually forging new paths, collaborating with both prominent designers & new young talent from all over the world. Whether ground-breakingly innovative or just plain elegant, our designers' creations will last for decades & their appeal will be timeless.

**THE EXPERIENCE OF A MARKET-LEADING BRAND:** For ligne roset, contemporary design means quality, continual technical innovation & longevity. Each & every one of our pieces is the product of more than a century's worth of conscientiousness & expertise.

Since 1860, most ligne roset furniture has been produced in our factories near Lyon, France - then, as now, with the help of the latest production methods. But even so, we cannot & will not replace one vital thing: handwork. So it's not just the design which makes each ligne roset piece completely individual & unique!

**A TRULY INTERNATIONAL DISTRIBUTION NETWORK:** With over 230 exclusive ligne roset stores & 730 retailers in around

60 countries, ligne roset is accessible almost everywhere & sold by carefully-selected & knowledgeable sales teams. Designed by talented interior architects, the in-store displays will give you exciting & inspirational ideas for your living space.

**COMPETENT ADVICE:** Your sales advisor will help you find the best possible solution for your living space, to perfectly suit both your taste & your requirements - selecting from our broad collections of upholstery, tables, chairs, sideboards, beds, storage furniture, lighting & accessories.

**A COMPLETE SERVICE:** Your ligne roset stockist will deliver, assemble & check your furniture, & in most cases remove the packaging. He will advise on how best to take care of your new furniture, but please also take time to read the care instructions which are supplied with it. And it doesn't just end there: whether you need to clean or replace your covers, replace a part or buy something new, you can always count on ligne roset. Wherever you happen to be in the world.

**OUR WEBSITE:** TO discover more about ligne roset, our Company, designers, our network of stockists, & get the latest news, why not visit our website: [www.ligne-roset.co.uk](http://www.ligne-roset.co.uk)